

OIOS METALS

CONTEMPORARY FURNISHINGS

MADE IN



AMERICA



Oios (Greek word for unique)

Background: Product Description

- Made in the USA
- Manufactured all in Carbon Steel (Not Stainless)
- Revolutionary Armor finish that withstands:
 1. Temperatures up to 400 degrees
 2. Resists dents and scratches
 3. Mild household Cleaners can be used to clean (Do not use abrasive cleaners as this will damage the finish, recommended damp cloth or automotive grade polish is recommended)

Product:

- Specializing in Hand made tables, mirrors, bars, desks and accessories
- Counter Tops, Vanity's, Back Splash
- 10 year limited warranty
- All custom made to order (Ships in 4-6 weeks)
- In business since 1998

Consistency of Finish:

• All products are bench made and will have variances in the exact uniformity of the metals surface. Indentations in the surfaces are common but not exacting. Our manufacturing process when we shape sheet metal by cutting, bending, welding, spinning, grinding and polishing will cause flat and radius surfaces to always vary. This Oios - unique hand made quality enhances the character of all our special products. None of our items are ever exactly matching as they are artfully reproduced.

- And we are Green!

All our products are a "Sustainable Design" and are made of 98% recycled metal. They are the most Eco friendly, durable and maintenance free furniture you will ever own!

1. Any of our products that are damaged can be recycled into reusable metal.
2. Our tables can be re-finished many times over from the original colors and finishes.
3. We use only recycled boxing for packaging.
4. Always consolidate orders for the lowest fuel usage for shipping.
5. Any scrap metal from our daily production is recycled back to our USA material suppliers.
6. The only wood products we use are from recycled crates and pallets for shipping to reduce carbon footprint.

As Oios Metals expands our manufacturing we are researching new options for a more total sustainable and energy efficient production facility. Solar panels, Wind turbines and more ways to reclaim waste is our goal. We hope everyone will join us to take any steps towards making green decisions in their lives.



Product Care Sheet

For any clames or additional information, please contact your authorized dealer.

OIOS Metals offers a wide variety of finishes on all our products. And although the finish is very resilient against scratching, there are some guidelines that are necessary to follow. Do not use abrasive cleaning agents or rough scouring type pads to clean or maintain product surfaces. Doing so will result in a dulling or scratching resulting in a loss of clarity on the surface finish. Avoid using products with petroleum distillates such as lacquer thinner and acetone. To maintain the brilliance of the finish, we recommend using a soft cotton cloth and non-ammonia base cleaning products. We have included two packets of polish. A #2-Red for fine scratches and a #3-Green for heavy. Follow the direction on the back of the packets for best result. The surface can be hand buffed by using these fine cut / rubbing compounds. Electric buffing is not recommended and will void any warranty.

In the event that the surface becomes heavily scratched or rough in parts of the texture, we have included 2000 grit sandpaper for easy repair. Do not use any lower grit as it may irrevoably damage the finish of the surface. When using the sandpaper (in a circular motion) with small amounts of water, make sure not to stay in one area for very long. Excessive or hard sanding will cause the surface to gum or may remove the finish altogether. The best way is to use your bare hand to locate the rough spots, use sandpaper lightly for about 2 to 3 seconds, then recheck the surface. This should remove the roughness. Some areas may require this several times, just don't allow any heat to build up between the surface and sandpaper. When the surface is smooth, use the enclosed polishing packets (#3 first, then #2) and hand buff. Using these guidelines will assure a beautiful finish for years to come.

Note (for all leg installation or bolt on bases): When attaching DO NOT OVERTIGHTEN. The nuts only need to be snug to function properly... over tightening will result on warping of the tabletop surface and / or breaking of the bolt.

When sitting up or moving our products please lift DO NOT DRAG.

Manufacturers Warranty:

10-year structural warranty only. Our finishes are designed for indoor use. Any improper maintenance or use will void any warranty (i.e. scratching, burning, dropping, dragging objects across surface areas, cutting on and / or other improper uses, etc.). Any damage or defects caused by freight must be reported with your designated carrier at the time of delivery.

Please enjoy your product for the many years to come and we thank you for your business.

Oios



Oios Metalized Polish... has been scientifically formulated using Nanotechnology - the manipulation of matter on an atomic and super molecular scale. It is designed to penetrate, strengthen and support our resilient Armor finishes. This remarkable product will seal coat moisture from penetrating our surfaces helping to prevent rust and delamination.



THE MONSTER polish restoration liquid improves clarity of finish with no smearing or build up. It is designed to clean, maintain and protects against UV sun fading and cracking. When used weekly it significantly repels water, dirt, grease, wax, alcohol based liquids, bleach, Ink and all food products including citrus fruit items to Red wines. These harsh substances will not penetrate the Monster's luminous finish.

Permanent ink from markers can be simply wiped off using acetone base finger nail polish remover. Our Oios Metals Armor polished finishes should outperform most stone, tile and glass from chipping, staining, cracking and being scratch resistant only (Not - scratch proof.) Our many durable colors will outlast any solid wood or laminate surfaces. Many of our exotic finishes can now be used outdoors for more information see your dealer.

That's right our Monster Polish almost does it all! Acting as a sunblock and moisture sealant for our **Sustainable 98% Recycled Steel Tables**, Countertops, Fire pits, Wall fascia and more. Fabrics, Vinyl's and Plastic's even fine Leather furniture can be protected. When applied to Glass it becomes sealed from moisture and long term mineral deposits.

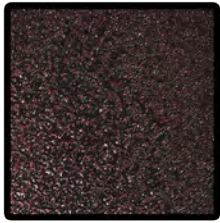
Just spray on, wipe into the surface as a damp coat, let set for 30 seconds... wipe off to a radiant finish! Oios Metals – Built in the USA!

(303) 778-0925
www.oiosmetals.com
accounts@oiosmetals.com



2015 Palette Colors

Palette 1



Earth Brown



Oil Rub Bronze



Textured Black



Pewter

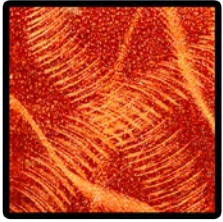


Silvervein

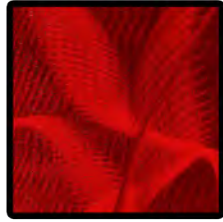
Palette 2



Scribble Steel



Orange



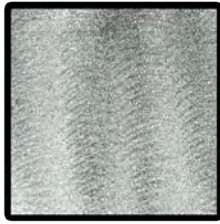
SCR Red Armor



Purple



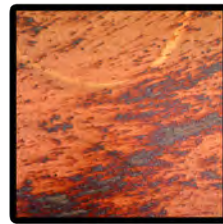
Blue



Straight Steel



Nightfall



Nova



Tuscan



Oblivion



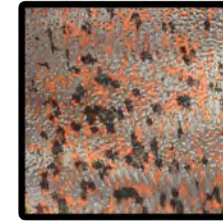
Random Steel



Stardust



Provance



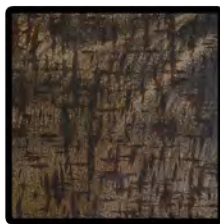
Magna



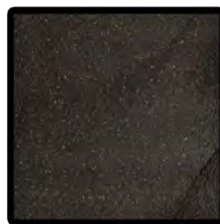
Copperstone



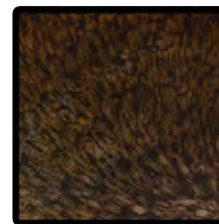
New World



Galaxy

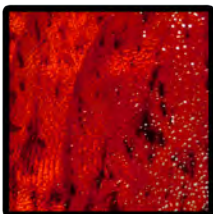


Black Diamond



Barracuda

Palette 3



Ruby



Amber



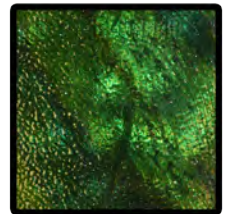
Amethyst



Onyx



Sapphire Blue



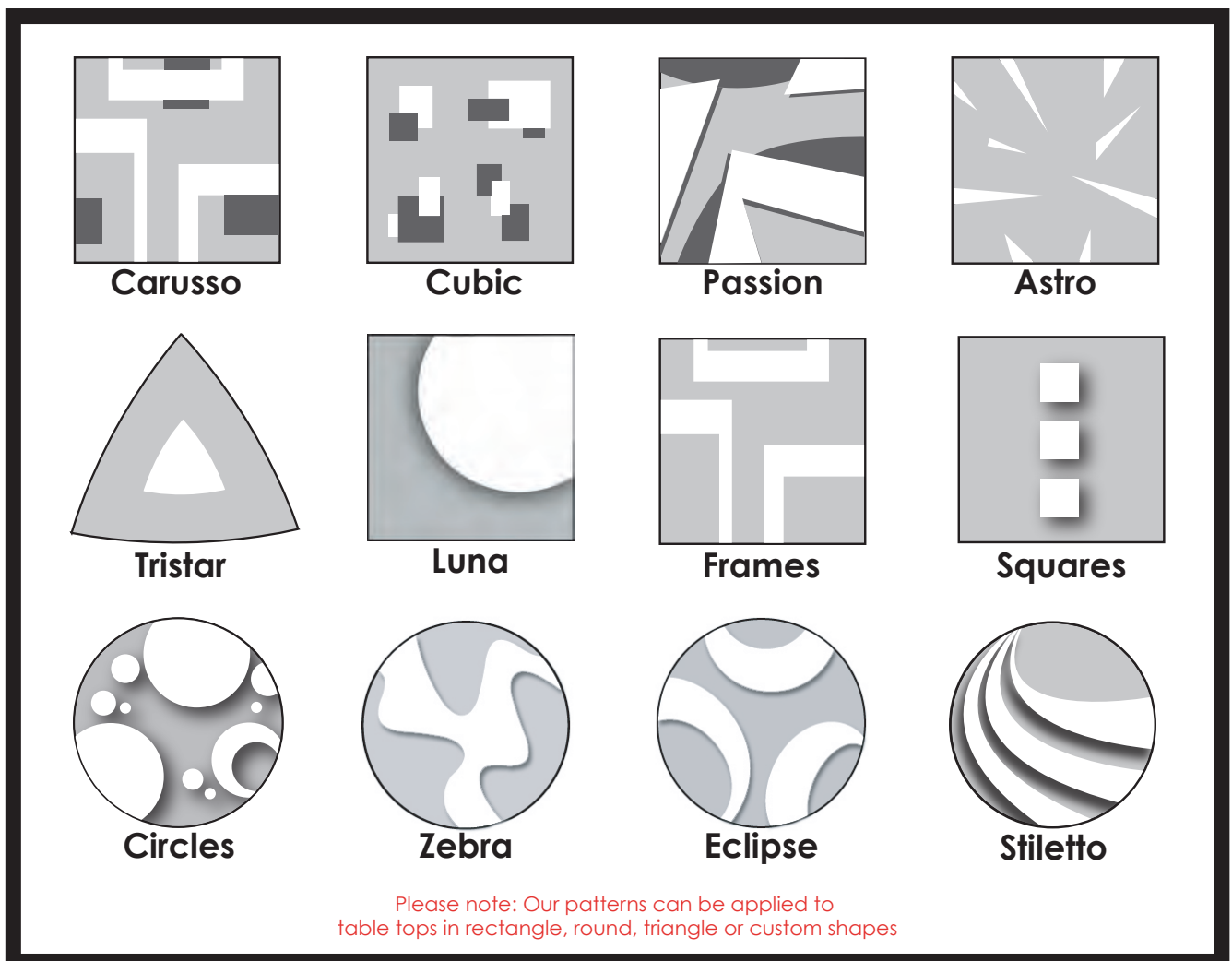
Emerald Green

Polished Steel Finishes

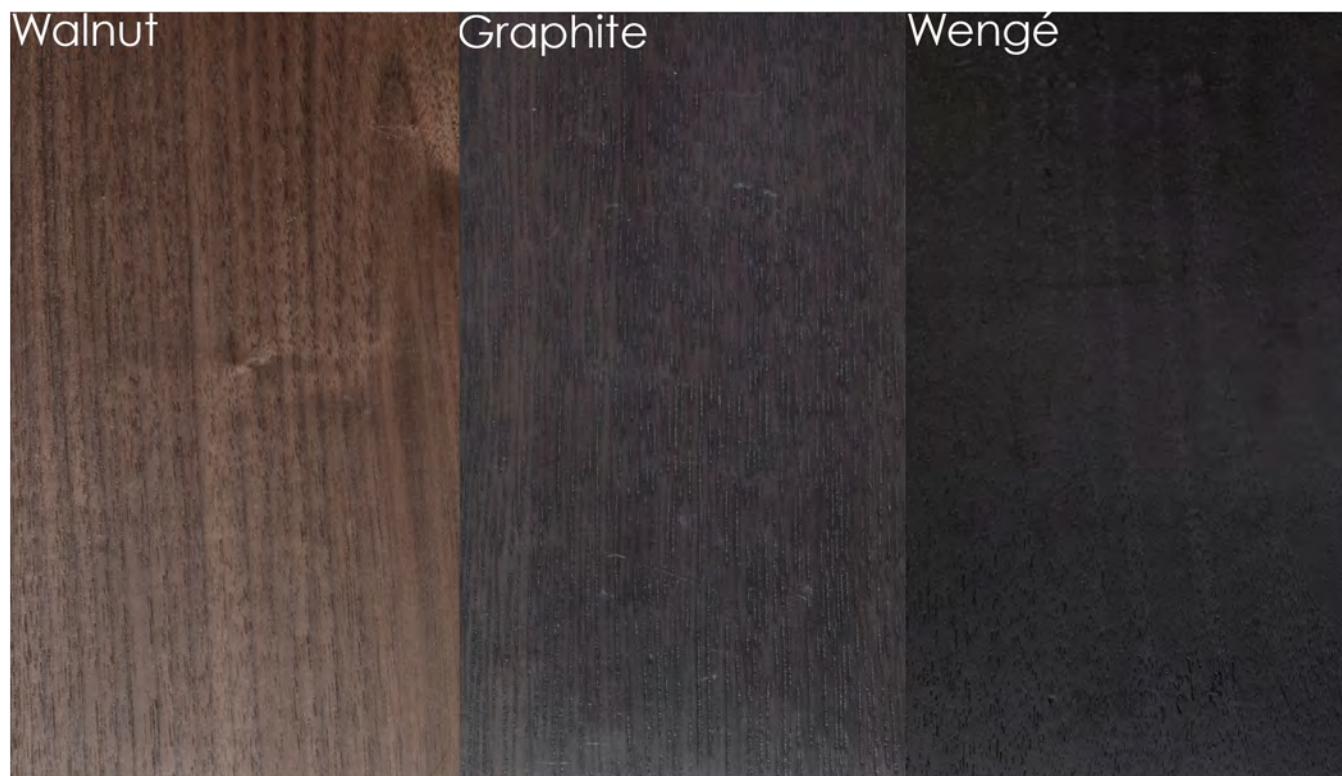


Table Top Patterns

■ Black ■ Palette Color □ Polished Steel



Wood Samples



Luxé Buffet (Metal Top & 4 Door)

Metal: Straight / Steel / Armor

Wood: Graphite

78" x 21" x 34"h

Several of our pieces come with the option of wood trimming including some of our Buffets (as seen above), Entertainment Centers & Traverse Console series (see *traverse* page for examples)

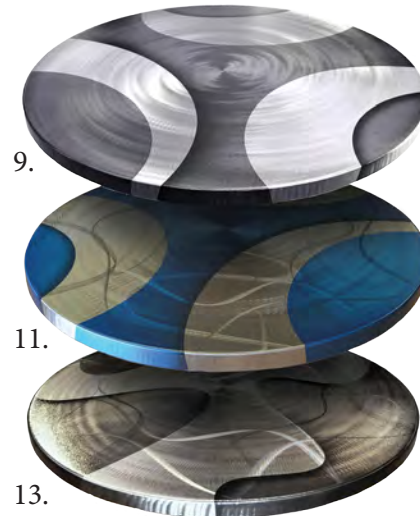
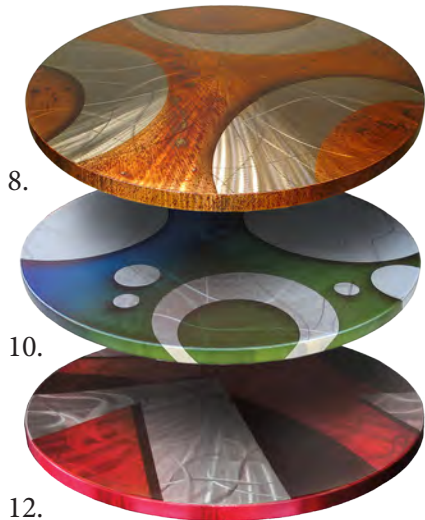
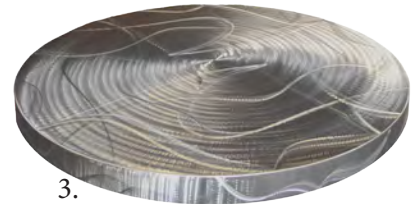
Bases & Legs



1. Rectangle 2. Clip 3. Tapered 4. Diamond Pedestal Base 5. Square Pedestal Base 6. Round Pedestal Base 7. Round Pole Base 8. Rectangle Pedestal Base 9. Martini Base 10. Cross Base 11. Structure Base

Round Table Tops

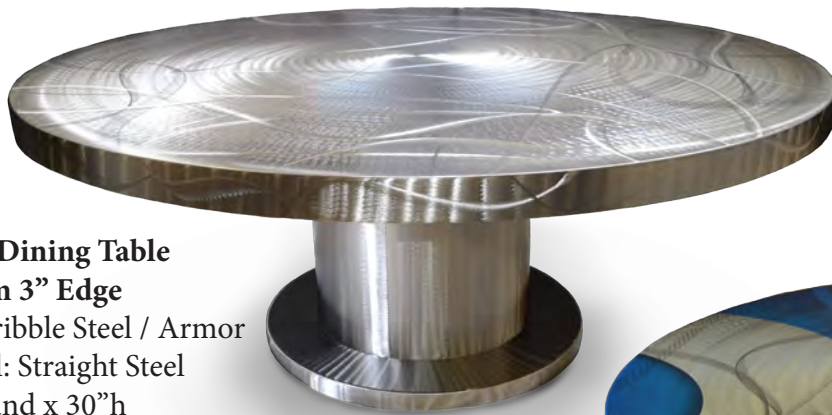
Standard Edge 1.75"



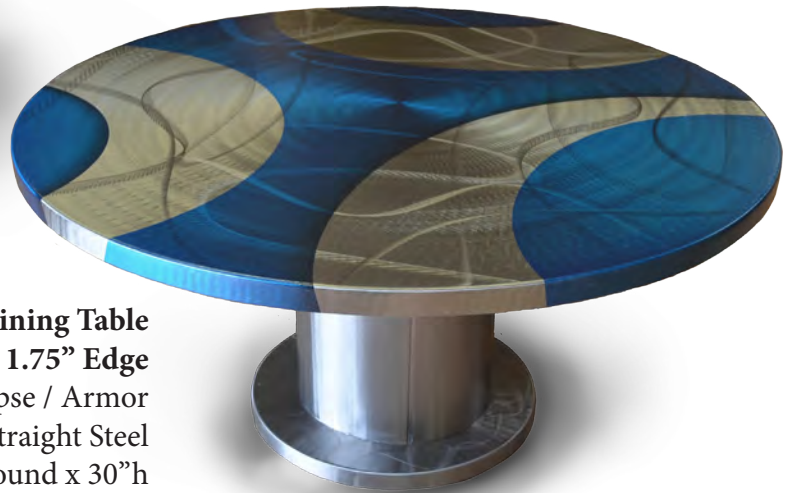
1. Straight/Steel 2. Random/Steel 3. Scribble/Steel 4. Scribble/Purple 5. Scribble/Provance 6. Random/Purple 7. Straight/Tuscan 8. Scribble/Nova/Eclipse 9. Straight/Black Diamond/Eclipse 10. Scribble/Blue Green Fade/Circles 11. Scibble/Blue/Eclipse 12. Scribble/Red/Passion 13. Scribble/New World/Zebra 14. Straight/Stardust/Logo 15. Straight/Nova/Logo (Note: Dye sublimation logo's have a max size restriction of 36" x 36")

Round & Oval Dining Tables

Round Dining Table
Medium 3" Edge
Top: Scribble Steel / Armor
Pedestal: Straight Steel
84" Round x 30"h

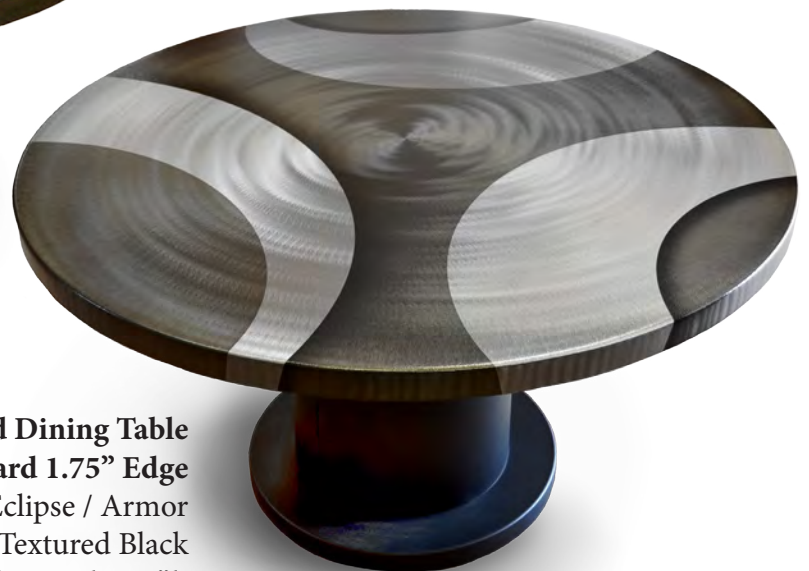


Round Dining Table
Standard 1.75" Edge
Top: Scribble / Blue / Eclipse / Armor
Pedestal: Straight Steel
54" Round x 30"h



Round Dining Table
Standard 1.75" Edge
Top: Scribble / Blue Green Fade / Circles / Armor
Pedestal: Straight Steel
54" Round x 30"h

Round Dining Table
Standard 1.75" Edge
Top: Straight / Black Diamond / Eclipse / Armor
Pedestal: Textured Black
60" Round x 30"h



***Any size 72" and over table must be Medium 3" Edge**



Round Standard 1.75" Edge
Top: Scribble / Nova / Armor
Pedestal: Textured Black / Armor
54" Round x 30"h



Round Standard 1.75" Edge
Top: Straight / Tuscan / Armor
Pole Base: Textured Black / Armor
48" Round x 30"h



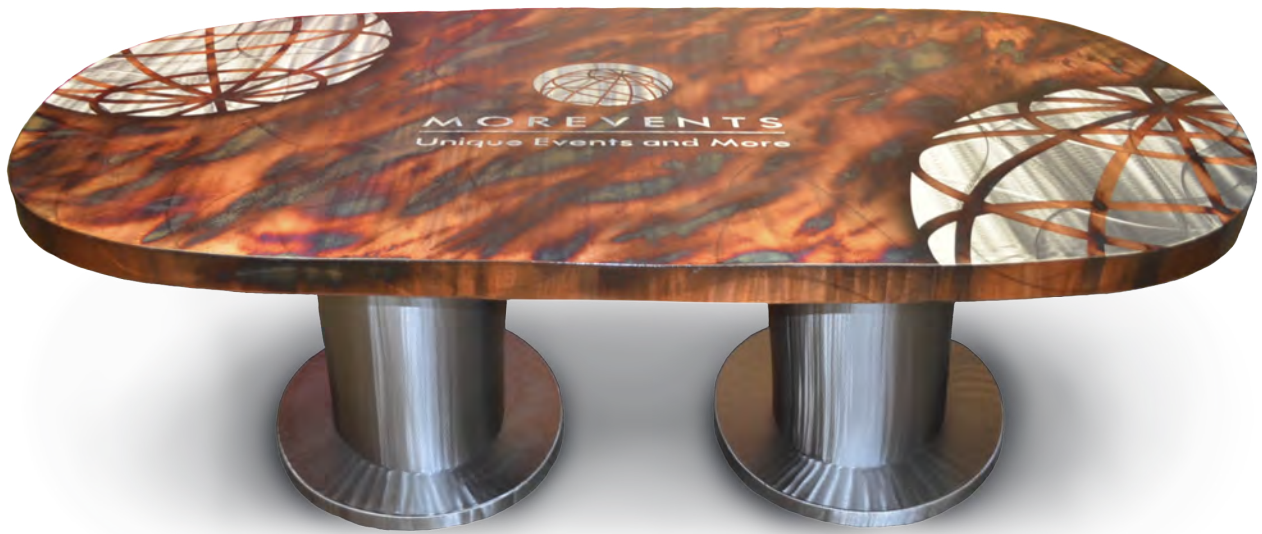
Round Standard 1.75" Edge
Top: Scribble / Provance / Armor
Pedestal: Oil Rubbed Bronze / Armor
48" Round x 30"h



**Standard Edge 1.75" Top With
Diamond Ped Base**
As Shown: Scribble / Amethyst / Armor
Base: Textured Black / Armor
48" Round x 30"h



**Round Dining Table
Standard 1.75" Edge**
Top: Scribble / Nova / Zebra
With Mercury Base: Oil Rubed Bronze
Ball: 8" Straight / Nova / Armor
48" Round x 30"h



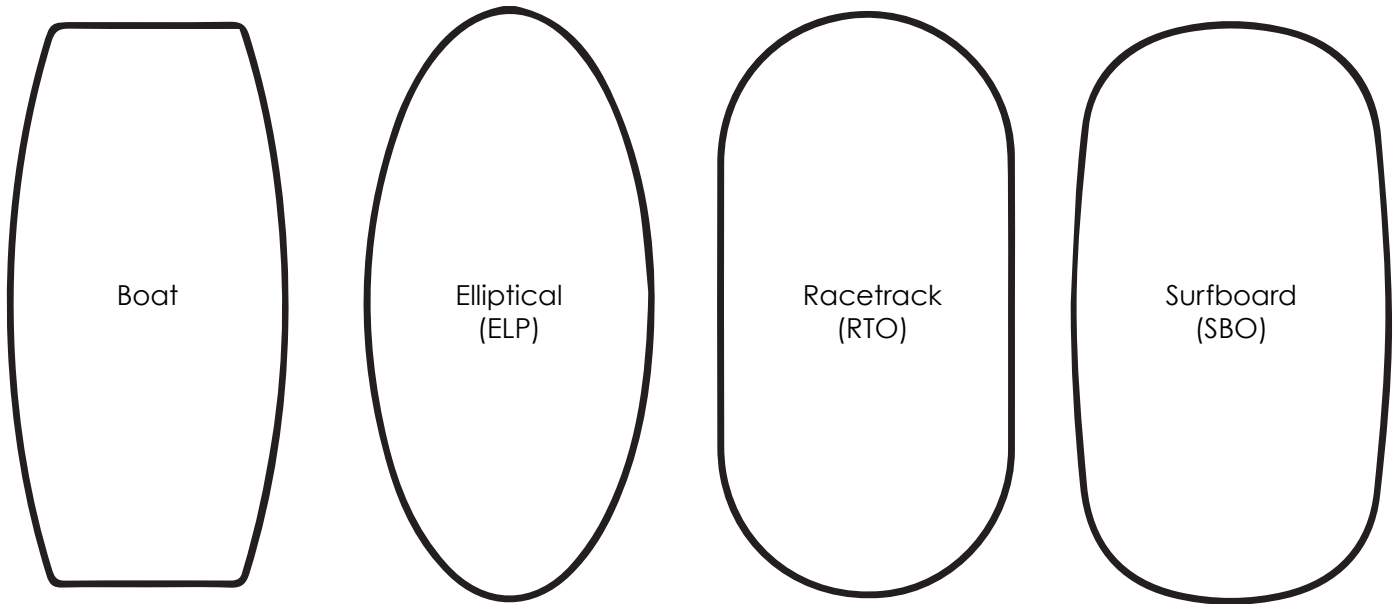
Surfboard Conference Table

Medium 3" Edge

Top: Scribble / Tuscan / Logo / Armor

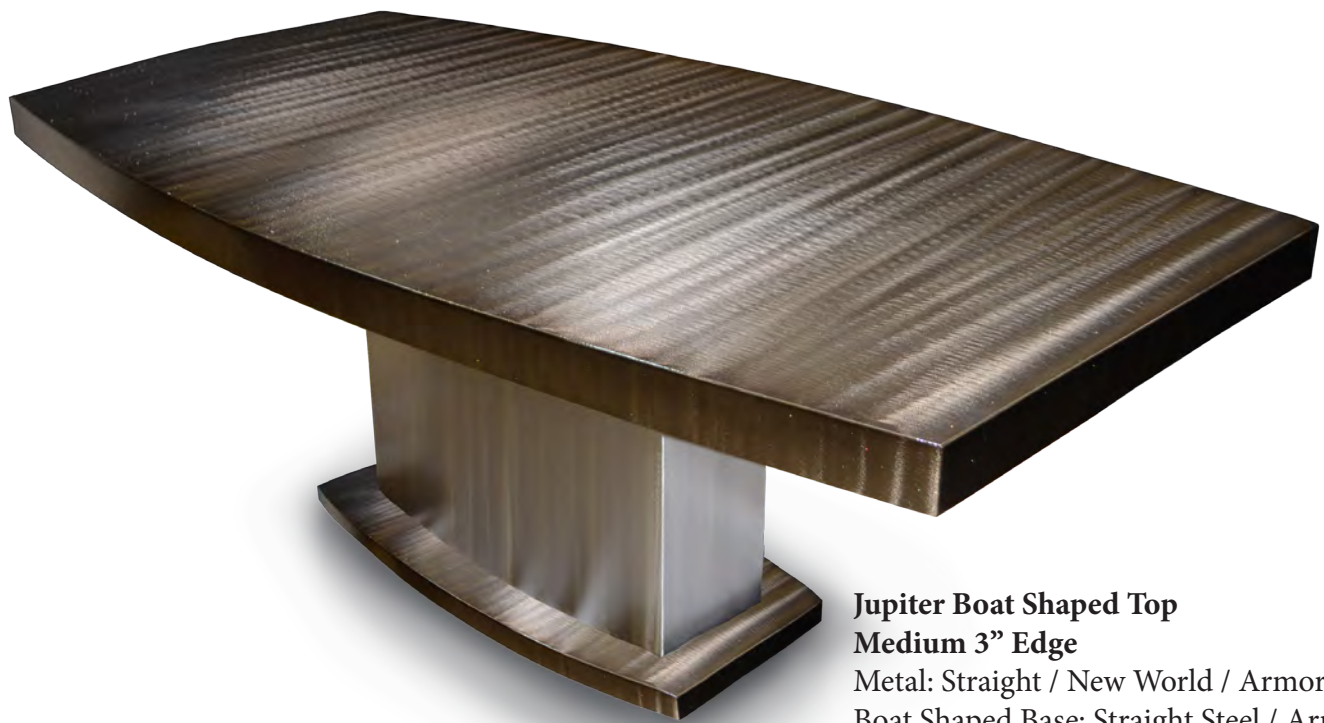
Double Pedestal Bases: Straight Steel / Armor

84" x 44" x 30"h





Boat Shaped Medium 3" Edge
Top: Scribble / New World / Armor
Square Pedestal Base: Textured Black / Armor
144" x 54" x 30"h



Jupiter Boat Shaped Top
Medium 3" Edge
Metal: Straight / New World / Armor
Boat Shaped Base: Straight Steel / Armor
84" x 44" x 30"h

Conference Tables



Boat Shaped Conference Table
Medium 3" Edge
Top: Scribble / Steel / Logo / Armor
Base: Straight / Steel / Armor
144" x 54" x 30"h



Boat Shaped Conference Table
Medium 3" Edge
Top: Random / Provance / Logo / Armor
Base: Textured Black
Custom Size: 16' x 5' x 30"h



***Any table over 96" in length must have a Medium 3" Edge**

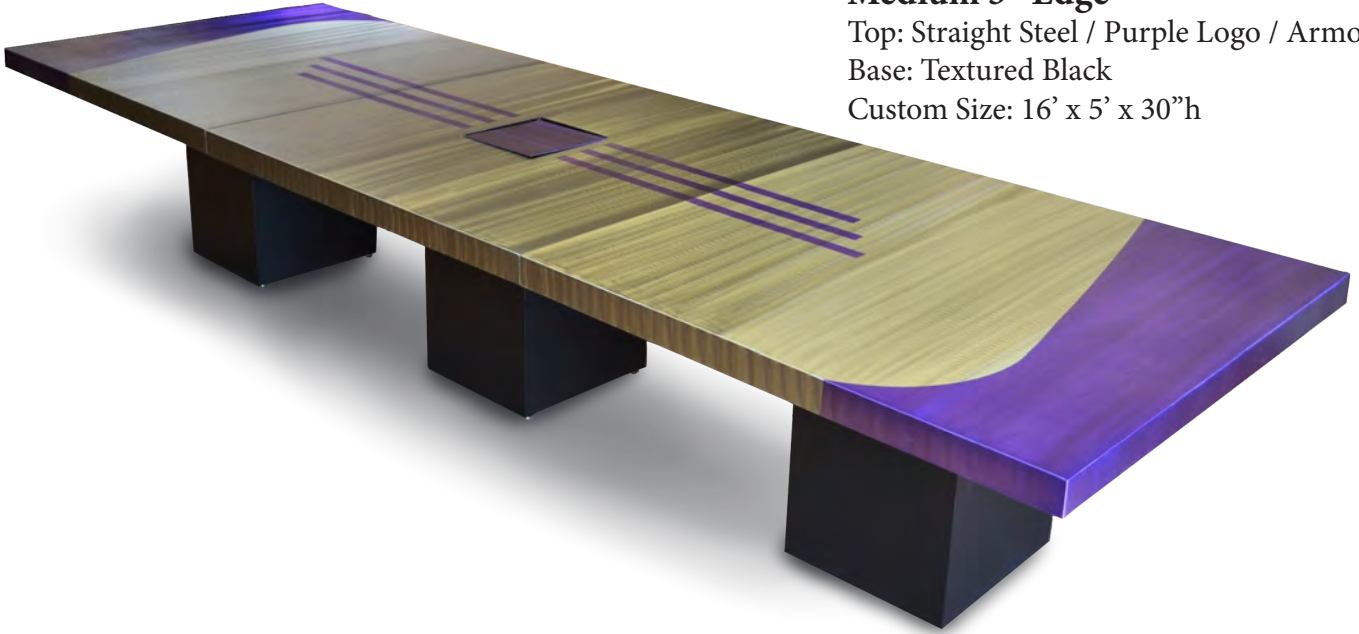
Rectangle Conference Table

Medium 3" Edge

Top: Straight Steel / Purple Logo / Armor

Base: Textured Black

Custom Size: 16' x 5' x 30"h



Rectangle Conference Table
Medium 3" Edge
Scribble / Red / Passion / Armor
Base: Textured Black
16' x 5' x 30"h

Rectangle & Square Dining Tables



Rectangle Dining Table

Standard 1.75" Edge

Top: Straight / Nova / Armor

Legs: Textured Black

72" x 42" x 30"h



Square End Table

Standard 1.75" Edge

Top: Scribble / Circles / Amethyst / Armor

Legs: Tapered / Textured Black

24" x 24" x 24"h



Epos Dining Table
Medium 3" Edge

Top: Scribble / Steel / Armor
Base: Textured Black / Armor
84" x 44" x 30"h



Structure 1 Console
Medium 3" Edge

Metal: Scribble / Nova / Armor
Base: Oil Rubbed Bronze
72" x 18" x 30"h



Structure 2 Dining Table
Medium 3" Edge

Metal: Straight / Black Diamond - Logo / Armor
Base: Textured Black
Accent: Straight / Steel / Armor
72" x 42" x 30"h



Structure 3 Dining Table
Medium 3" Edge

Top: Scribble / New World / Armor
Base: Polished Stainless Steel
72" x 42" x 30"h



Structure 3 Dining Table

Top: Glass Top - 5/8" (3/8" bevel)
Base: Polished Stainless Steel
72" x 42" x 30"h



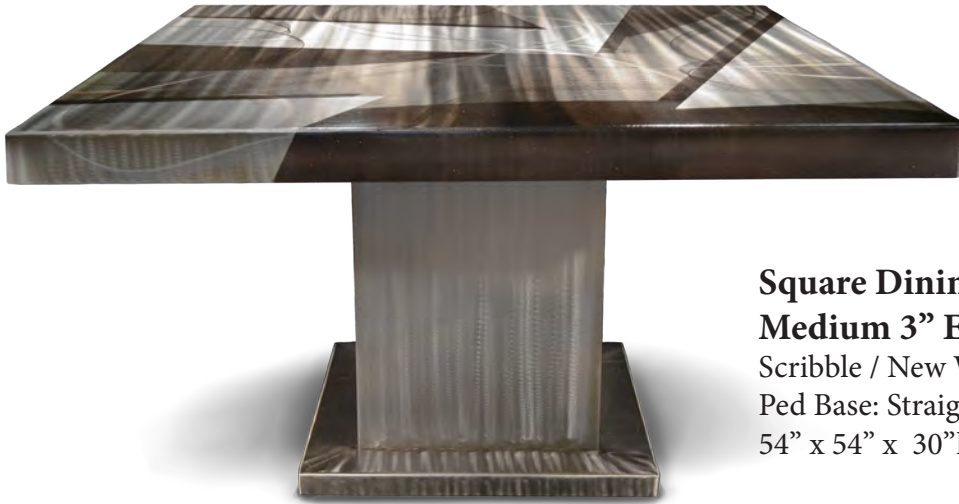
Structure 3 Dining Table
Medium 3" Edge

Top: Scribble / New World / Armor
Base: Textured Black
72" x 42" x 30"h



Structure 3 Dining Table

Top: Glass Top - 5/8" (3/8" bevel)
Base: Textured Black
72" x 42" x 30"h



Square Dining Table

Medium 3" Edge

Scribble / New World / Passion / Armor

Ped Base: Straight Steel

54" x 54" x 30"h



Rectangle Dining Table

Medium 3" Edge

Scribble Steel / New World / Armor

Ped Base: Oil Rub Bronze

84" x 44" x 30"h



Rectangle Dining Table

Medium 3" Edge

Straight / Black Diamond / Squares / Armor

Ped Base: Textured Black / Armor

84" x 44" x 30"h



Rectangle Dining Table
Standard 1.75" Edge
Scribble / Nova / Custom Squares / Armor
96" x 48" x 30"h

Tristar Dining Table



Tristar Dining Table
Standard 1.75" Edge
Metal: Scribble / Provance / Tristar / Armor
Round Pedestal: Textured Black / Armor
72" x 72" x 72" x 30"h



Aspen Dining Table (Extention)

(Eliptical Oval Black Glass Top)

Base: Straight / Steel / Armor

Footplate: Polish Stainless Steel

43" x 71" (closed) 107" (open) x 30h

Chair: CH 240-01



Sapporo Extention Dining Table (Boat Shaped)

Top: Random / Copperstone / Armor

Base: Random / Copperstone / Armor

Footplate: Polished Stainless Steel

(also available in non-extention... see pricelist)

42" x 102" x 30"h

Chair: CH 422-01



Sapporo Extention Dining Table (Boat Shaped)

Top: Straight / Nightfall / Armor
Base: Polished Stainless Steel
Footplate: Polished Stainless Steel
42" x 102" x 30"h
Chair: CH 422-01



Sapporo Extention Dining Table (Square Luxé)

Top: Scribble / Provance / Armor
Base: Scribble / Provance / Armor
Footplate: Polished Stainless Steel
42" x 92" x 30"h
Chair: CH 224-01



Radius Dining Table

Medium 3" Edge

Top: Swirl / Barracuda / Armor

Base: Polished Stainless Steel

72" Round x 30" h

Chairs: CH 244-01



Pisa Dining Table

Medium 3" Edge

Top: Straight / Stardust / Armor

Base: Straight / Stardust / Armor

Accent: Black / 3 Squares / Polished Stainless Steel

Footplate: Polished Stainless Steel

42" x 72" x 30" h

Chairs: CH 444-01



**Round Roma Dining Table
Standard 1.75" Edge**

Top: Scribble / Black Diamond / Eclipse
Base & Footring: Polished Stainless Steel
48" Round x 30"h
Chair: CH 230-01



**Round Roma Bar Table
Standard 1.75" Edge**

Top: Scribble / Sapphire / Armor
Base & Footring: Polished Stainless Steel
48" Round x 30"h
Chair: CH 629-06



Luxé Rectangle Dining Table
Standard Luxé 1.75" Edge

Top: Scribble / New World / Armor
Legs: Polished Stainless Steel
92" x 44.5" x 30"h
Chair: CH 629-01



"XX" Rectangle Dining Table
Medium Luxé 3" Edge

Top: Swirl / Barracuda / Passion / Armor
Base: Swirl / Barracuda / Armor - Polished Stainless Steel
42" x 90" x 30"h (*this size only*)
Chair: CH 200-01 (*with metal*)



Volaré Extention Dining (Boat Shaped)

Top: Scribble / Nova / Armor

Column: Scribble / Nova / Armor

Foot Plate: Polished Stainless Steel
72" (closed) 102" (open) x 42" x 30"h



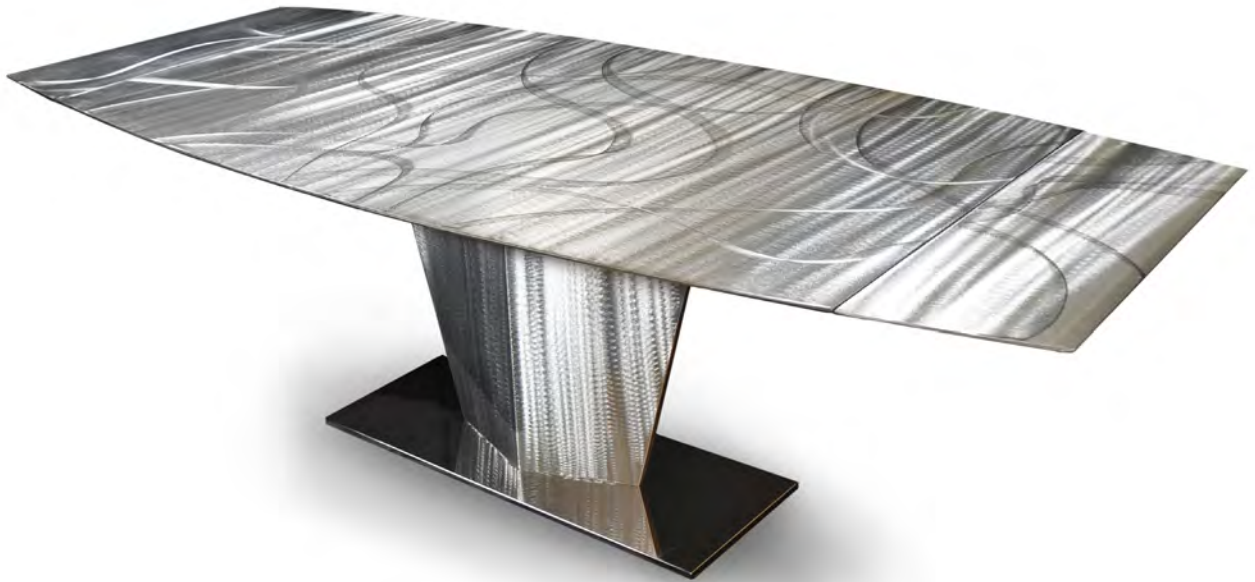
Volaré Extention Dining (Boat Shaped)

Scribble / Nova / Armor

Column: Scribble / Nova / Armor

Footplate: Polished Stainless Steel

Chair: CH 419-01



Volaré Extention Dining (Boat Shaped)

Top: Scribble / Steel / Armor

Column: Straight / Steel / Armor

Foot Plate: Polished Stainless Steel

72" (closed) 102" (open) x 42" x 30"h



Volaré Extention Dining (Boat Shaped)

Top: Scribble / New World / Armor

Column: Scribble / New World / Armor

Footplate: Polished Stainless Steel

Chair: CH 419-01 (See next page for specs)



Rectangle Serendipity Dining Table

Standard 1.75" Edge

Metal Top: Scribble Steel

Base: Polished Stainless Steel

42" x 84" x 30"h



Serendipity Dining Table

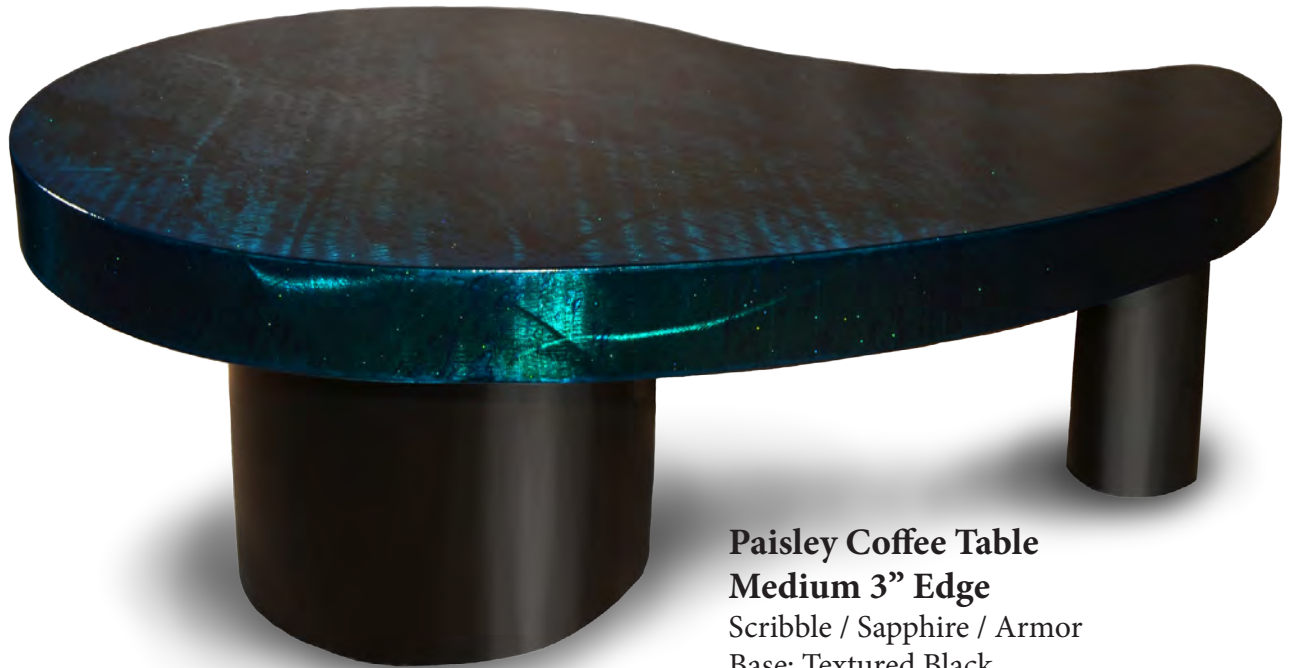
Glass Top - 5/8" (3/8" bevel)

Base: Polished Stainless Steel

42" x 84" x 30"h

Chair: CH 224-01

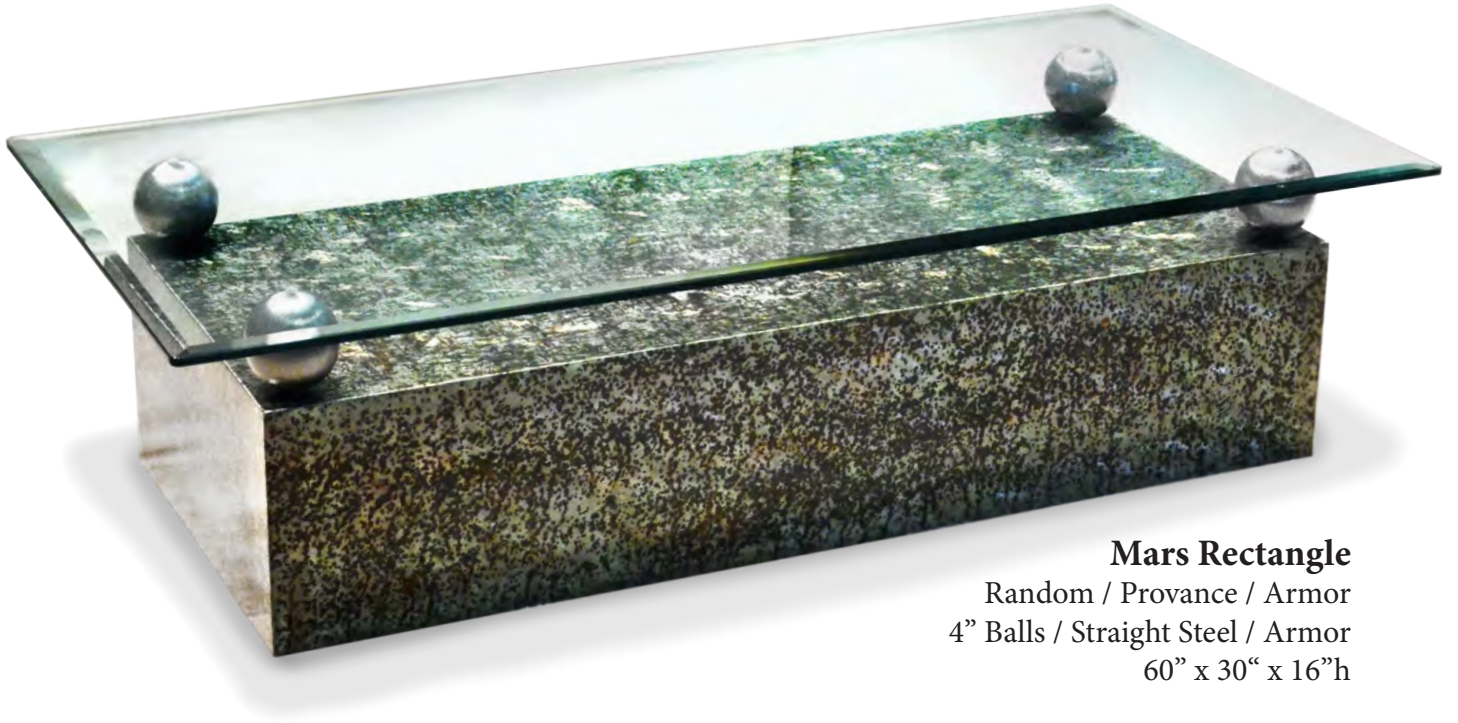
Occasional Tables



Paisley Coffee Table
Medium 3" Edge
Scribble / Sapphire / Armor
Base: Textured Black
58" x 30" x 16"h

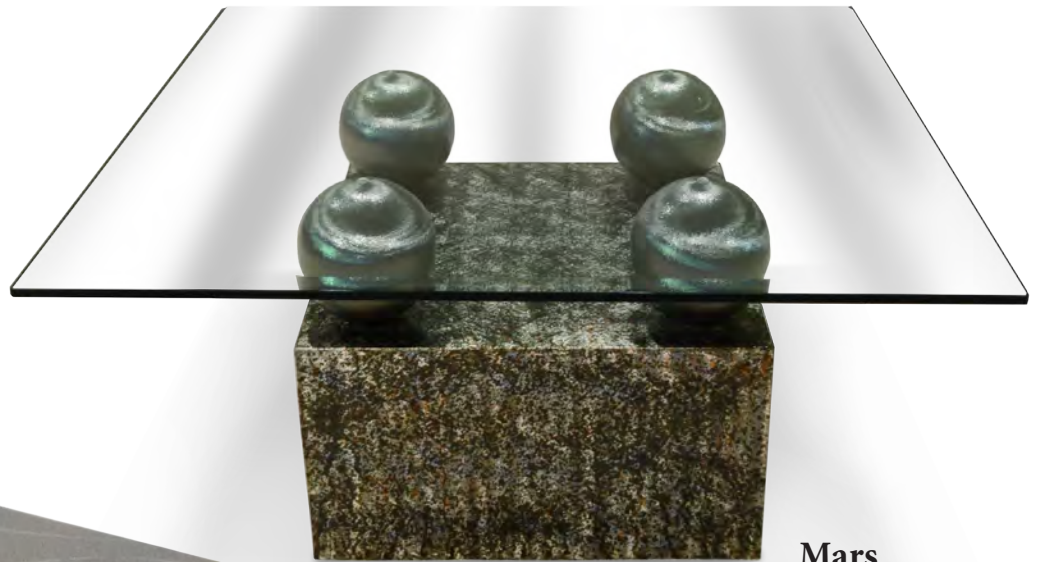


Paisley Coffee Table
Medium 3" Edge
Top: Random / New World / Armor
Base: Textured Black
58" x 30" x 16"h



Mars Rectangle

Random / Provance / Armor
4" Balls / Straight Steel / Armor
60" x 30" x 16"h



Mars

Random / Provance / Armor
4" Balls / Straight Steel / Armor
42" x 42" x 16"h



Cube

Scibble / New World / Luna / Armor
22" x 22" x 22"h



Juno Coffee Table

Random / Nova / Astro / Armor
40" x 40" x 16"h



Revolution End & Coffee Tables

Random / Tuscan / Armor
End: 31" x 24" x 22"h (20"h glass)
Coffee: 51" x 42" x 16"h (14"h glass)



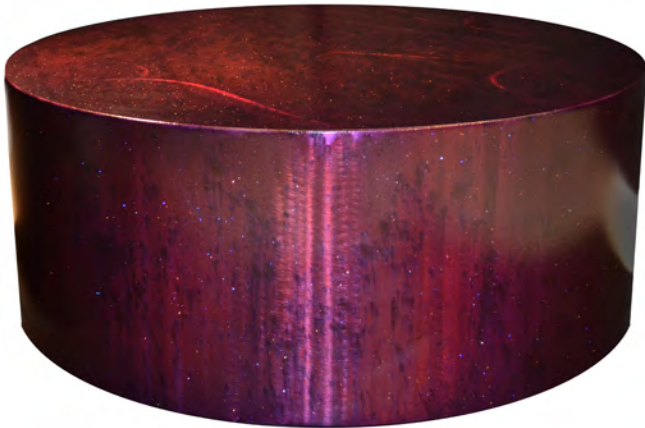
Juno End Table

Random / Nova / Astro / Armor
22" x 22" x 22"h



Structure 1.75" Edge Coffee Table

Top: Scribble / New World / Armor
Base: Oil Rubbed Bronze / Armor
Accent: Straight / New World
52" x 30" x 16"h



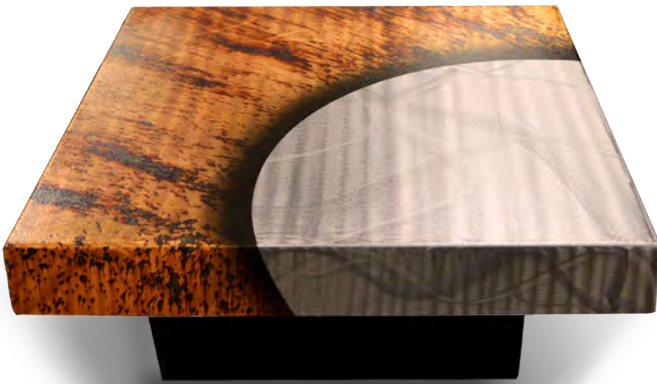
Drum Coffee Table

Scribble / Amethyst / Armor
40" Round x 16"h



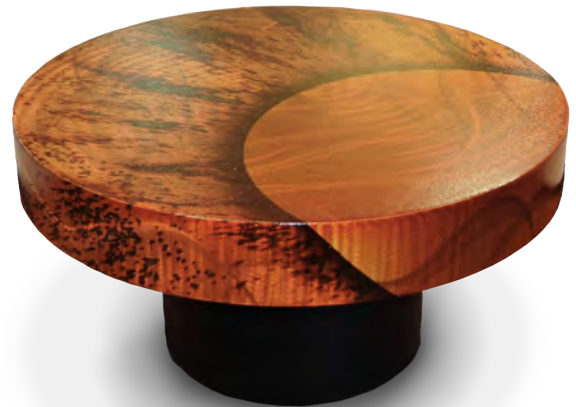
Drum End Table

Scribble / Ruby / Armor
22" Round x 22"h



Square Luna 5" Coffee Table

Scribble / Nova / Luna / Armor
Base: Textured Black / Armor
42" x 42" x 16"h



Harmon Luna 5" Coffee Table

Scribble / Nova / Luna / Armor
Base: Textured Black / Armor
36" Round x 16"h



Parallax Rectangle Coffee Table

Scribble / New World / Armor

28" x 52" x 16"h



Luxé Coffee & End Tables

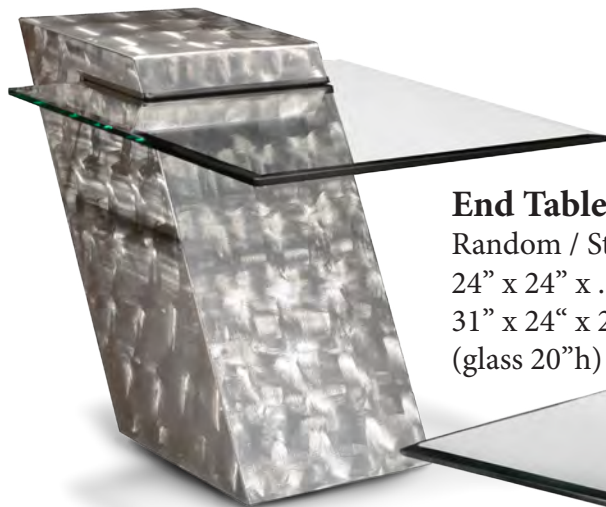
Tops: Scribble / Magna / Armor

Legs: Polished Stainless Steel

End: 28" x 28" x 22"h

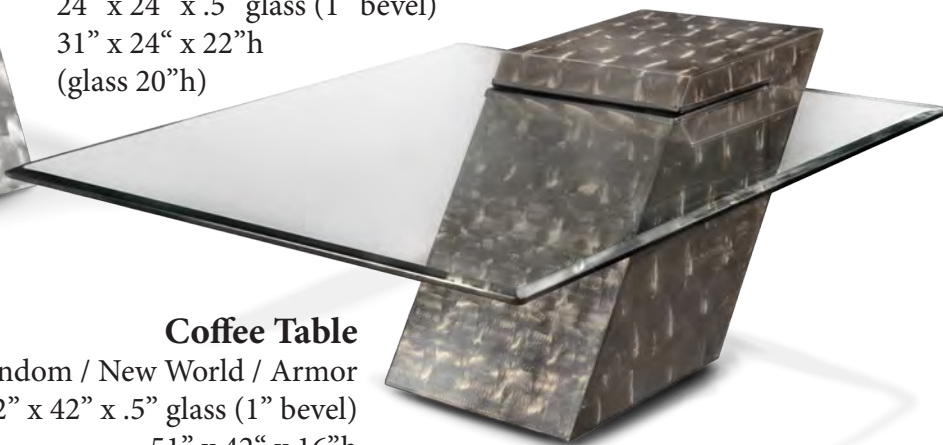
Coffee: 28" x 52" x 16"h

Revolution Collection



End Table

Random / Steel / Armor
24" x 24" x .5" glass (1" bevel)
31" x 24" x 22"h
(glass 20"h)



Coffee Table

Random / New World / Armor
42" x 42" x .5" glass (1" bevel)
51" x 42" x 16"h
(glass 14"h)



End Table

Random / Steel / Armor
24" Round x .5" glass (1" bevel)
31" x 24" x 22"h
(glass 20"h)



Coffee Table

Random / New World / Armor
42" Round x .5" glass (1" bevel)
51" x 42" x 16"h
(glass 14"h)



Astro End Table

Metal Top: Scribble Steel / Nova
Base: Polished Stainless Steel
22" x 22" x 22"h



Jazz End Table

Metal: Scribble Steel / Nova
24" x 24" x 22"h



Jazz Coffee Table

Metal: Scribble Steel / Nova
40" x 40" x 14"h

Serendipity Collection



Console Table

Glass: 5/8" (3/8" bevel)

Base: Polished Stainless Steel

18" x 66" x 34"h



End Table

Glass: 5/8" (3/8" bevel)

Base: Polished Stainless Steel

24" x 24" x 21"h



Coffee Table

Glass: 5/8" (3/8" bevel)

Base: Polished Stainless Steel

30" x 54" x 16"h

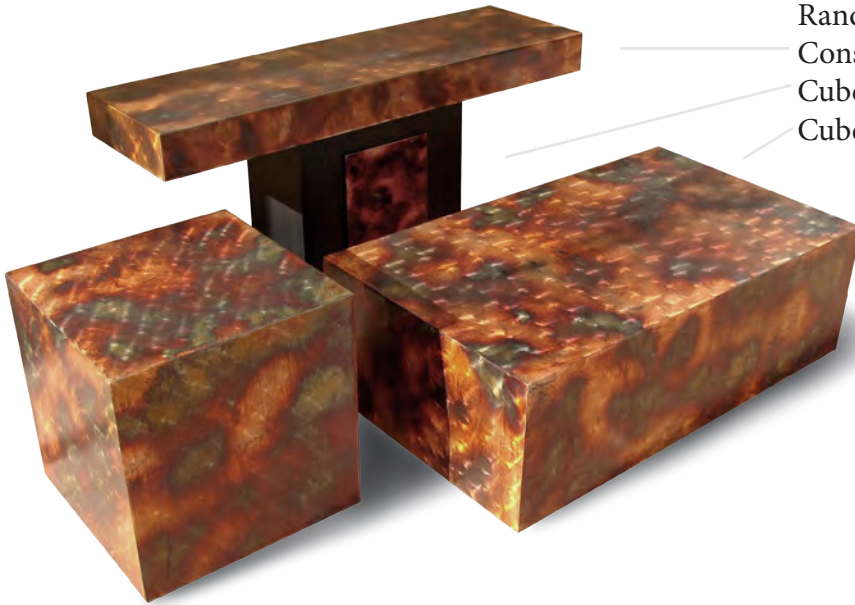
Cubes

Random / Tuscan / Armor

Console: 18" x 52" x 30"h

Cube End Table: 22" x 22" x 22"h

Cube Coffee: 52" x 30" x 16"h



**Structure 1 Console"
Medium 3" Edge**

Metal: Scribble / Nova / Armor

Base: Oil Rubbed Bronze

Accent: Straight / Nova

72" x 18" x 30"h



Juno Console

Top: Random / Tuscan / Armor
Base: Oil Rubbed Bronze
Ball: 12" Random / Tuscan
60" x 18" x 34"h



Traverse Console

Scribble Steel / Armor
Base: Textured Black
Balls: 4" Straight Steel
72" x 18" x 36"h



Buffets



Two Door

Standard 1.75” Edge

Metal: Swirl / Barracuda / Armor

Wood: Graphite

48” x 23” x 34”h



Wood Top & Four Door

Metal: Scribble / Nova / Armor

Wood: Graphite

75” x 22” x 30”h



Luxé Buffet

Standard Luxé 1.75” Edge

Top: Base & Handles: Scribble / Steel Armor

Pannels: Polished Stainless Steel

Wood: Wengé

24” x 78” x 35”h

**Metal Top & Four Door
Standard 1.75" Edge**

Metal: Straight / Steel / Armor

Wood: Wengé

78" x 21" x 34"h



**Metal Top & Four Door
Medium 3" Edge**

Metal: Scribble / Nova / Armor

Wood: Natural Walnut

78" x 24" x 34"h



**Metal Top & Four Door
Medium 3" Edge**

Metal: Scribble / Nova / Armor

Wood: Graphite

78" x 24" x 34"h



Entertainment Centers

Serendipity TV Cabinet

Glass: 5/8" (3/8" bevel)

Base: Polished Stainless Steel
With Glass Shelves

20" x 72" x 20"h



Standard Entertainment Center

Standard 1.75" Edge

Scribble / Mono Black / Passion / Armor

Sliding Door - TV Cabinet

72" x 22" x 24"h

Revolution Entertainment Center

Random / Nova / Armor

78" x 16" x 24"h



Desks

Revolution Desk

Random / New World

Glass: 42" x 72" x .5"

(1" bevel)

80" x 48" x 30"h



Serendipity Desk

Glass: 5/8" (3/8" bevel)

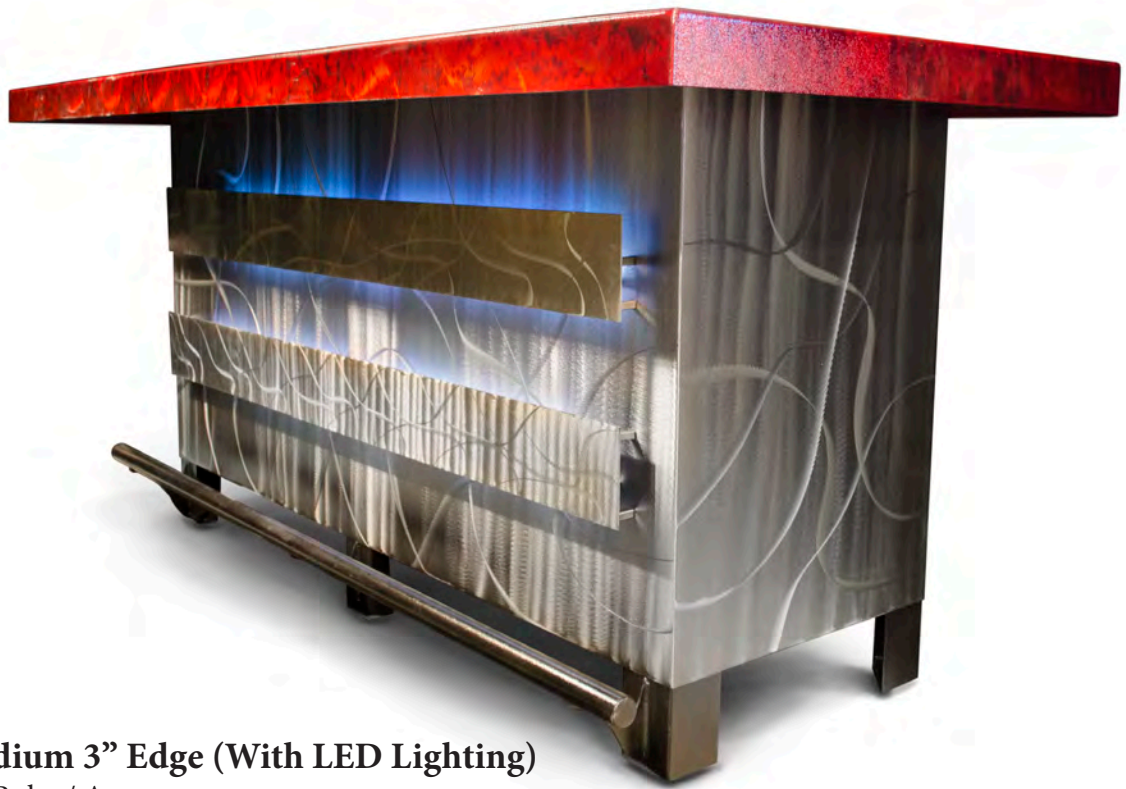
Base: Stainless Steel

With Pencil Drawer / Black Modesty Panel

42" x 76" x 30"h

(not an Oios Metals chair)

Bars



LED Bar Medium 3" Edge (With LED Lighting)

Top: Scribble / Ruby / Armor

Base: Scribble / Steel / Armor

Accent: Scribble / Steel / Armor

84" x 30" x 42"h



G-Bar Standard 1.75" Edge

Top: Scribble / Nova / Armor

Base: Scribble / Steel / Armor

Accent: Straight / Nova / Armor

84" x 30" x 42"h



Paisley Bar Medium 3" Edge

Top: Scribble / Galaxy / Armor
 Base: Scribble / Steel / Armor
 Inside: Textured Black / Armor
 65" x 36" x 42"h



Rover Rolling Bar

Polish Stainless Steel / Black
 23" Round x 40"h



G-Bar Standard 1.75" Edge

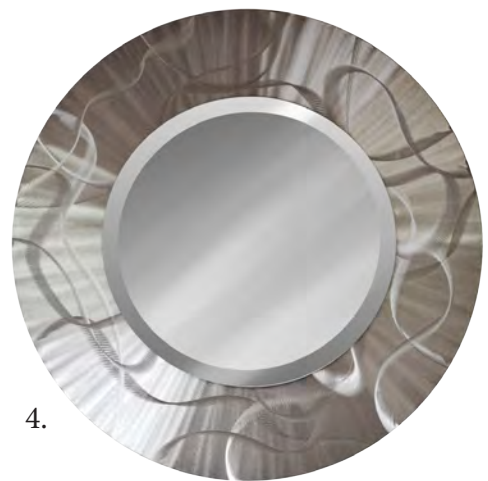
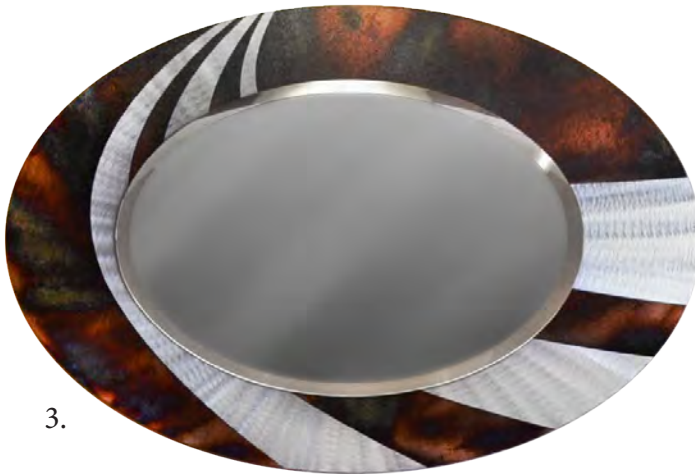
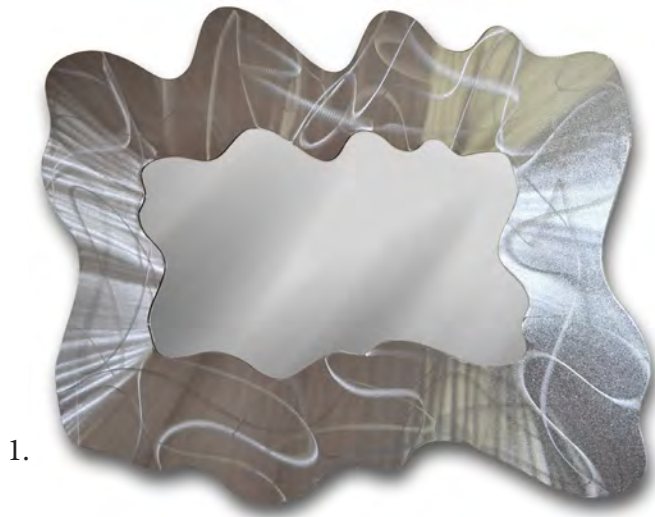
Top: Scribble / Black Diamond / Passion / Armor
 Base: Scribble / Steel / Armor
 Accent: Scribble / Black Diamond / Armor
 Inside: Textured Black / Armor
 84" x 30" x 42"h



Astro-Bar Set

Glass: 5/8" (3/8" bevel)
 Base: Polished Stainless Steel
 84" x 30" x 42"h
 Chair: Astro (See Chair Page)

Mirrors

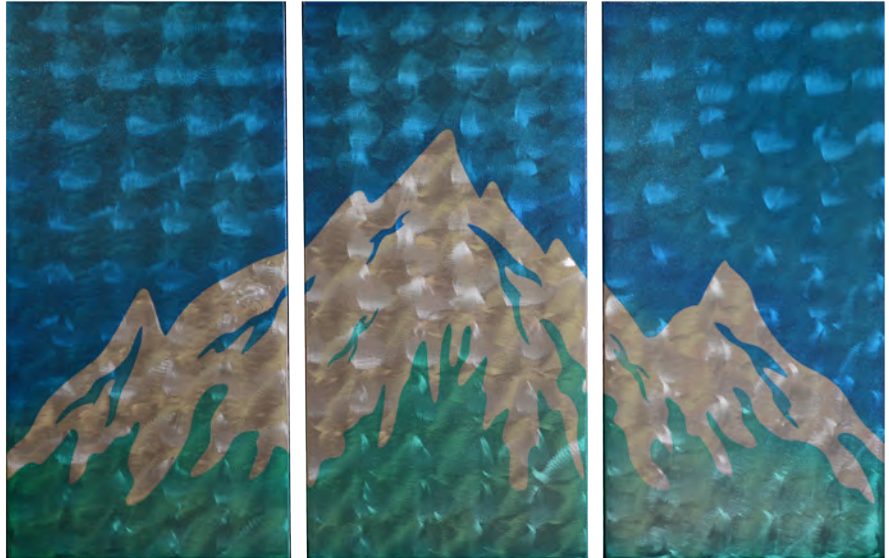


1. Dali - Scribble / Steel / Armor 2. Pappion - Scribble / Nova / Steel / Armor 3. Stiletto - Straight / Tuscan / Steel / Armor
4. Round - Scribble / Steel / Armor 5. Flower - Scribble / Blue / Armor 6. Passion - Scibble / Red / Steel / Armor

Wall Art

Wall Art - Mountain

Random / Blue-Green Fade / Armor
18" x 38" (x3)



Wall Art - Abstract

Straight / Orange-Red Fade / Armor
18" x 38" (x3)



Wall Art - Bonsai Tree

18" x 38" (x3)



Fire Pits



Square Parallax Fire Pit

Scribble / Sapphire / Armor

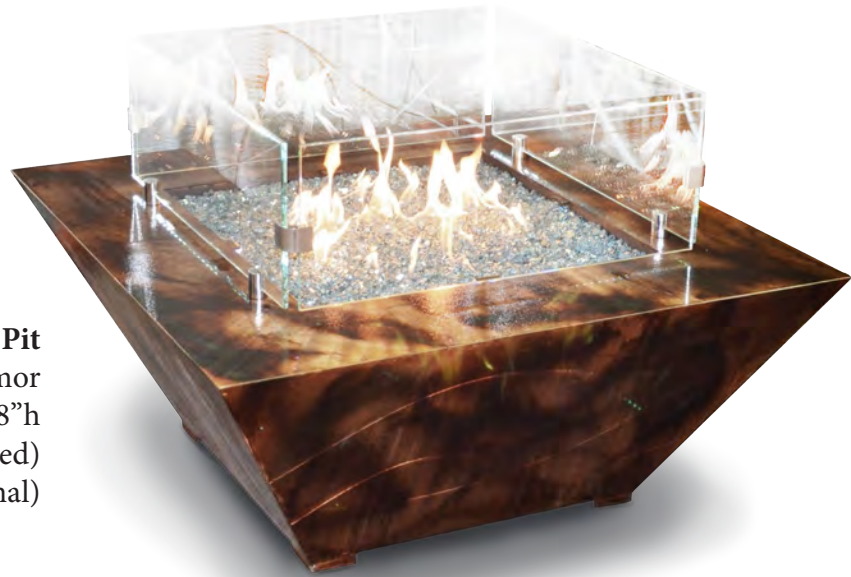
42" x 42" x 18"h



Rectangle Parallax Fire Pit

Scribble / Ruby / Armor

60" x 30" x 18"h



Parallax Fire Pit
Scribble / Tuscan / Armor
42" x 42" x 18"h
Glass: Clear .5" (Included)
Windbreak (Optional)



Athena Fire Pit
Majestic 5" Edge
Scribble / Nova / Armor
Glass: Purple Beads
42" Round x 24"h



Structure Buffet

Metal Panels: Scribble / Steel

Base: Textured Black

Wood: Walnut

22" x 75" x 34"h



Inspiration Dining Set

Glass Top: 5/8" (3/8" bevel)

Base: Polished Stainless Steel

48" x 120" x 30"h

Chair 222-01

*also available 48" x 96" x 30"h



Valentino Dining Set

Metal Tops: Scribble / Provance /
3" Medium Luxé Edge
Base: Oil Rubbed Bronze
42" x 84" x 30"h
Chair HB1436-01



Valentino Console Tables

Metal Tops: Scribble / Nova / 3"
Medium Luxé Edge
Base: Oil Rubbed Bronze

Coffee: 28" x 54" x 16"h
End: 24" x 28" x 22"h
Console: 18" x 52" x 30"h



Cortina Console Tables

Metal Top: Scribble Steel / 1.75"
Standard Luxé Edge
Base: Satin Stainless Steel

Coffee: 30" x 54" x 16"h
End: 30" x 30" x 22"h
Console: 20" x 50" x 30"h



Cortina Console Tables

Glass Top: 5/8" (3/8" bevel) - Black & Silver Only
Base: Satin Stainless Steel

Coffee: 28" x 52" x 16.5"h
End: 28" x 28" x 22"h
Console: 18" x 48" x 30"h



Torina Dining Set

Metal Top: Scribble Steel / 1.75"

Standard Luxé Edge

Base: Satin Stainless Steel

42" x 84" x 30"h

Chair 444-01



Torina Dining Set

Metal Top: Scribble Steel / 1.75"

Standard Luxé Edge

Base: Satin Stainless Steel

42" x 84" x 30"h

Chair HB1436-01



Cortina Dining Set

Glass Top: 5/8" (3/8" bevel) - Black & Silver Only

Base: Satin Stainless Steel

40" x 79" x 30"h

Chair 444-01



Cortina Dining Set

Glass Top: 5/8" (3/8" bevel) - Black & Silver Only

Base: Satin Stainless Steel

40" x 79" x 30"h

Chair HB1436-01



Round Dining Set

Metal Tops: Scribble / Eclipse / Copperstone /
1.75" Standard Edge
Base: Oil Rubbed Bronze
54" Round x 30"h
Chair HB1436-01



Chair: HB 1436-01

FR:17" x SH:18" x H:39"h



Chair: CH 629-06 (Swivel Barstool)



Barstool: CH 641-06



Chair: CH 411-01
Fabric: Pella / Ebony
FR:19.5" x SH:18" x H:45"



Barstool: CH 640-06
(Stripe on Front)

Silver Nail Heads



Gold Nail Heads



Chair: CH 422-01N

Custom Dining Chairs

Chair: CH 419-01

FR: 19.5" x SH: 19" x H: 45" x D: 18"



Tuxedo Back with Fabric Inlay & Button



Tuxedo Back with Metal Inlay & Metal Button



Tuxedo Back with Fabric Inlay & Button



Tuxedo Back with Metal Inlay & Metal Button

Custom Dining Chairs

CH-240 Collection



Chair: CH 240-01A-FS&BS
(4 Legs Front Stripe & Back Stripe)
FR: 19.5" x SH: 19" x H: 43" x D: 18"



Chair: CH 240-01A-FSO
(4 Legs Front Stripe Only)
FR: 19.5" x SH: 19" x H: 43" x D: 18"



Barstool 640-06A-FSO
(4 Barstool Legs with Front Stripe Only)
FR: 21" x SH: 30" x H: 45" x D: 19"



Chair: CH 240-01B-FS&BS (Closed Back)
(2 Front Legs with Front Stripe & Back Stripe)
FR: 19.5" x SH: 19" x H: 43" x D: 18"



Chair: CH 240-01B-BSO (Closed Back)
(2 Front Legs with Back Stripe Only)
FR: 19.5" x SH: 19" x H: 43" x D: 18"

Custom Dining Chairs



US 282-01

FR: 19.5" x SH: 19" x H: 43" x D: 18"



US 282-01

(3 Buttons On Front)

FR: 19.5" x SH: 19" x H: 43" x D: 18"



CH 618-01

Legs: Black / Armor

Metal Back Panel: Straight / Steel / Armor

FR: 19" x SH: 18.5" x H: 42" x D: 18"



CH 618-01

Legs: Black / Armor

Metal Back Panel: Straight / Black Diamond / Armor

FR: 19" x SH: 18.5" x H: 42" x D: 18"

Custom Dining Chairs



US 422-01
 (No Metal)
 FR: 21" x SH: 18" x H: 44.5" x D: 18"



CH 422-01
 Metal Back Panel: Random / Steel / Armor
 FR: 21" x SH: 18" x H: 44.5" x D: 18"



US 422-01
 Metal Back Panel: Straight / Nightfall / Armor
 FR: 21" x SH: 18" x H: 44.5" x D: 18"



Chair: CH 200-01
 Legs: Polished Stainless Steel
 Metal Back Panel: Swirl / Barracuda / Armor
 FR: 21.5" x SH: 19" x H: 47" x D: 18"

Custom Dining Chairs



Chair: CH 172-01
(With Metal Wings)
Straight Steel / Provance
FR: 19.5" x SH: 18" x H: 42" x D: 17"



Chair: US-244-01
(With Metal Button)
FR: 21" x SH: 18.5" x H: 44" x D: 19"



Chair: CH 240-01A-NS
(4 Legs No Stripe)
FR: 21" x SH: 19" x H: 44" D: 19"



Chair: CH 230-01
FR: 21" x SH: 18.5" x H: 38" x D: 19"



Chair: CH 777-01
FR: 21" x SH: 18.5" x H: 38" x D: 19"

Custom Dining Chairs



Chair: CH 629-01

(No Metal)

Legs: Polished Stainless Steel

FR: 19" x SH: 20" x H: 41" x D: 19"



Chair: CH 629-01

Metal Back Panel: Scribble / New World / Armor

Legs: Polished Stainless Steel

FR: 19" x SH: 20" x H: 41" x D: 19"



Chair: CH 444-01

Metal Back Panel: Straight / Steel / Armor

Legs: Polished Stainless Steel

SH: 19" x H: 44"

In Stock Dining Chairs

Chair: CH 338-01

Legs: Polished Stainless Steel

FR: 18.5" x SH: 18.5" x H: 37" x D: 16"

Gray



Black



In Stock Dining Chairs

Chair: CH 224-01

FR: 18.5" x SH: 18" x H: 51" D: 18"

Colors as shown



White



Gray

Black

Custom Barstools



Barstool: BS 622-06

(With Metal Back)

FR: 19" x SH: 30" x H: 47" x D: 15"



Barstool: Astro

(Swivel)

Polished Stainless Steel

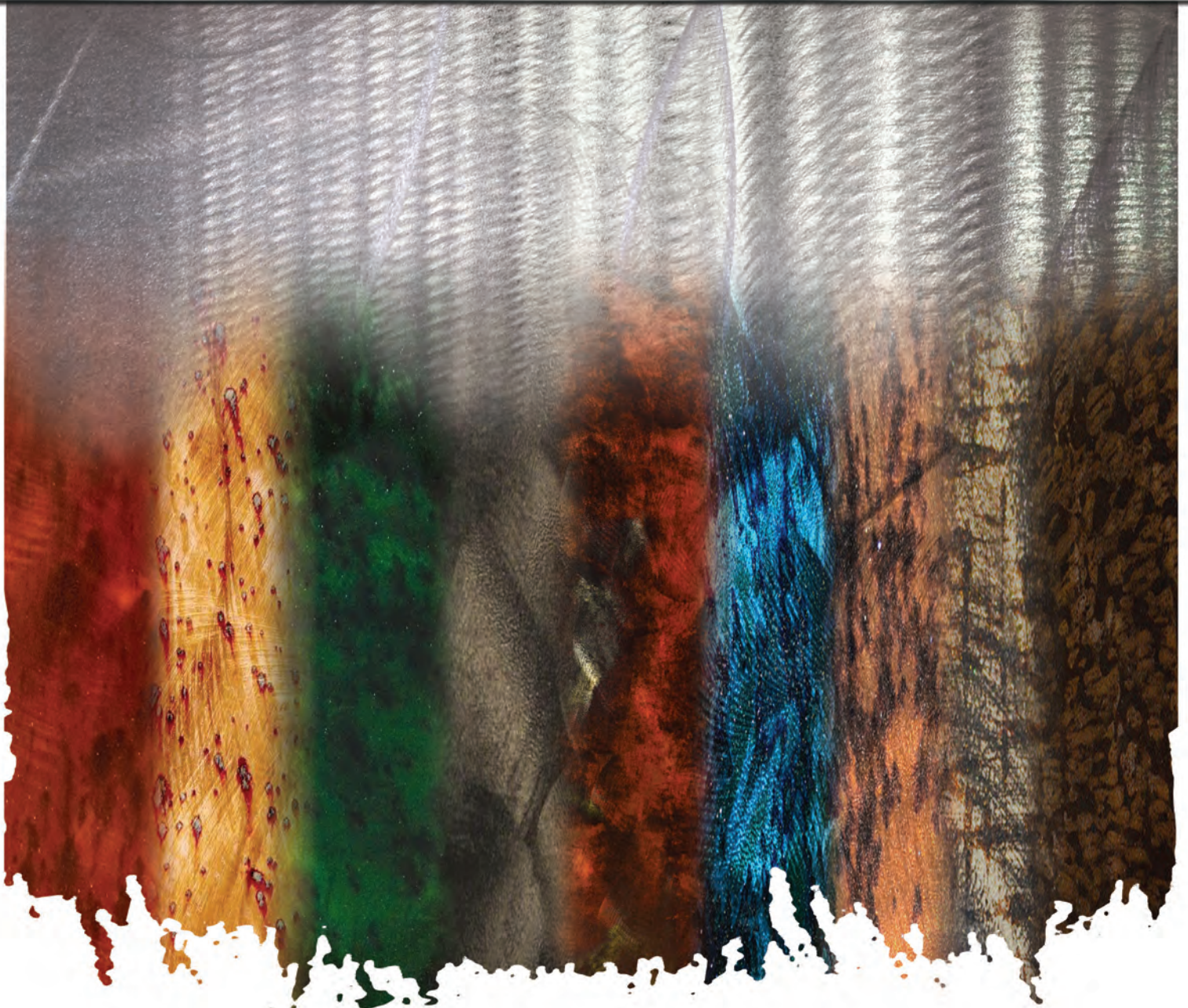
Custom Seat Cushion: Ritz Cobalt

19.5" x 19.5" x 29.5"h

oiōs METALS

CONTEMPORARY FURNISHINGS

2015 Addendum





Sapporo Buffet (3 Door)

Metal: Scribble / Stardust / Armor

Wood: Gray

60" x 23" x 34"h



Sapporo Buffet (4 Door)

Metal: Scribble / Stardust / Armor

Wood: Gray

78" x 22.25" x 34"h



Structure Buffet (3 Door)

Metal Panels: Scribble / Stardust / Armor

Base: Textured Black

Wood: Walnut

54" x 22.25" x 34"h



Structure Buffet (4 Door)

Metal Panels: Scribble / Stardust / Armor

Base: Textured Black

Wood: Walnut

71.5" x 22.25" x 34"h



Serendipity Dining Set

Metal Top: White Pearl / Armor

Standard Edge (1.75") 84" x 42" x 30"h

Base: Polished Stainless Steel

Chair: CH224-01



Volaré Dining Set

Metal Top: Scribble / Stiletto / Black Diamond / Armor

Edge (1.25") 72" (closed) 102" (open) x 42" x 30"h

Base: Textured Black / Polished Stainless Steel

Chair: CH419-01

Chair: CH 240-01

(Closed Back)

Body: Castillo-Metal

Seat & Back: Right on Pewter

FR: 21" x SH: 19" x H: 44" D: 19"



Roma Dining Set

Metal Tops: 72" Scribble / Eclipse / Provance /
Medium Edge (3")

Base: Polished Stainless Steel

Chair: CH240-01

Chair: CH 424-01

Fabric: Hobbs - Raven

Metal: Straight / Nova

SH: 19" x H: 35" D: 21"



Square Dining Set

Metal Tops: 60" Scribble / Nova / Armor

Standard Edge (1.75")

Base: Square - Textured Black

Chair: CH424-01

Chair: CH 220-01

Fabric: Paradi - Café

FR: 19.5" x SH: 19" x H: 43" x D: 18"



Rectangle Dining Set

Metal Top: Swirl / Barracuda / Armor

Medium Edge (3") 72" x 42" x 30"h

Legs: Tapered - Textured Black

Chair: CH220-01

Chair: CH 422-01

Body & Seat: Castillo - Metal

Back: Emory - Pewter

FR: 21" x SH: 18" x H: 44.5" x D: 18"



Sapporo Dining Set

Metal Top: Scribble / Stardust / Armor

Edge (1.25") 72" (closed) 102" (open) x 42" x 30"h

Base: Textured Black / Polished Stainless Steel

Chair: CH422-01



Chair: CH 444-01

SH: 20" x H: 43"

Fabric: M9788 - Fog

Legs: Polished Stainless Steel



Fabric: M9788 - Fog
Metal Back Panel: Straight / Steel / Armor
Legs: Polished Stainless Steel



Seat: Piccolo - Frost
Back: Deco - Onyx
Legs: Polished Stainless Steel



Chair: CH 422-01

Body & Seat: Castillo - Metal

Back: Emory - Pewter

FR: 21" x SH: 18" x H: 44.5" x D: 18"



54" Round Dining Set

Metal Top: Scribble / Tuscan / Armor

Standard Edge (1.75") 54" Round x 30"h

Base: Textured Black

Chair: CH422-01





CH 618-01

Fabric: Hobbs - Sandstone

Base: Textured Black

FR: 19" x SH: 18.5" x H: 42" x D: 18"



Barstool: CH 618-04

Fabric: Hobbs - Mocha

Base: Polished Stainless Steel

Counter Seat Hight 26"h



Barstool: CH 618-06

Fabric: Hobbs - Mocha

Base: Polished Stainless Steel

Bar Seat Hight 30"h



Barstool: CH 629-06
Seat: Castillo - Black
Back: Right on Red
Base: Polished Stainless Steel
Bar Seat Hight 30”h

Barstool: CH 629-04
Fabric: M9788 - Fog
Base: Polished Stainless Steel
Counter Seat Hight 26”h



Round Roma Bar Table
Standard 1.75” Edge
Top: Scribble / Ruby / Armor
Base: Polished Stainless Steel
42” Round x 42”h
Barstool: CH 629-06